



www.53degrees.net

FIFTYTHREEDEGREES

Production Specification 2008-2009

Venue address - navigational

53 Degrees, Brook Street,
Preston, PR1 7BQ

Venue address – postal

UCLan Students' Union, Fylde Road,
Preston, PR1 2TQ

Switchboard

01772 893000 (9-5pm)

Reception fax

01772 894970

Box Office

www.lancashiretickets.com

Events Manager (Bookings & Hires)

David Evans

Tel: 01772 894861

Mob: 07812 347680

Fax: 01772 894975

e-mail: djevans@uclan.ac.uk

devans@53degrees.net

Venue Manager (FOH, Bars & Security)

David Knight

Tel: 01772 894849

Box Office: 01772 894873

Mob: 07725 365778

Fax: 01772 894975

e-mail: dknight@uclan.ac.uk

Production Coordinator (Head of production)

Sam Barratt

Tel: 01772 894864

Fax: 01772 894975

e-mail: sbarratt@uclan.ac.uk

Events Assistant (Press Marketing & Promotion)

Julie Cotton

Tel: 01772 894862

Fax: 01772 894975

e-mail: jcotton@uclan.ac.uk

Venue

The 53° Venue is a 1200 (1500 Live Bands) capacity room on two levels (the Pit and the Mezzanine). The Mezzanine can be divided from the Pit by means of drapes dropped in from the roof to provide a 550 capacity venue, with full access to bars, toilets and cloakroom.

Touring vehicles are parked behind the building on our own car park, which has space for up to four trucks and coaches and three 16 amp single phase landlines.

Load in is by two sets of double doors; one set opens to offstage at stage left, the other onto the dancefloor in the Pit.

The stage is solid concrete and measures 51' wide x 30' deep x 3' high.

Sound

53° has an in-house PA that can be entirely removed for touring productions.

In House PA

Stage stacked left and right stacks consisting of:

6 x Ohm BR218S 2 x 18" sub
8 x Ohm BR15S 15" & 1.5" BNC mid/top (biamped)

3 x Lab Gruppen Lab 4000 amplifier (subs)
3 x Lab Gruppen Lab 4000 amplifier (mid)
3 x Lab Gruppen Lab 2002 amplifier (top)

Ohm Cred three way crossover

Apex DBq Zero dual 31 band graphic equaliser

Allen & Heath iDR8 for routing, delay processing and automatic evacuation announcements.

FOH & monitors hired in by arrangement according to acts production specification.

Mezzanine Equipment

The Mezzanine system is flown and is normally configured as a delay to the main stage. For Mezzanine only events this is supplemented by equipment from the main stage and the delay is disabled

2 x Ohm 1 x 18" sub
6 x Ohm BR15S 15" & 1.5" BNC mid/top (not biamped)

2 x Lab Gruppen Lab 2002 amplifier

Citronic AP215 Graphic Equaliser

DJ Monitors

2 x JBL SP212-9 Midtops
2 x JBL VS125HS (2x15") Subs
1 x Lab Gruppen Lab 1600 amplifier
1 x Crown 3600
2 x BSS X-overs

DJ Equipment

Any combination of the following (dependent on events) can be arranged in either room

5 x Technics 1210 Mk 2 DJ turntable
2 x Pioneer CDJ1000 Mk 3
3 x Pioneer CDJ1000 Mk 1
2 x Pioneer CDJ1000 Mk 2
1 x Pioneer EFX1000 DJ effects unit
1 x Allen & Heath X:one 464 mixer
1 x Allen & Heath X:one 62 mixer
1 x Pioneer DJM600 mixer
1 x Pioneer DJM800 mixer

Lighting

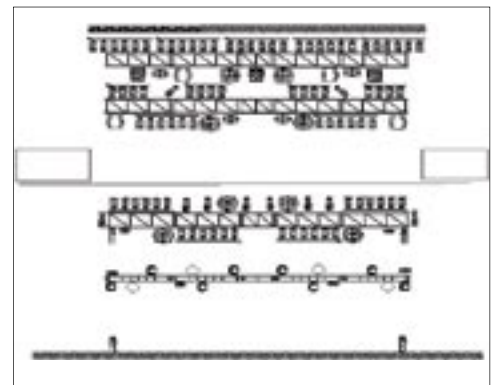
53° has a comprehensive in-house lighting system, which can be completely or partially removed for touring productions.

The system is based around a 72-way Avolites ART 2000i installed dimmer system set up to provide 66 channels of dimming and 6 channels of relay switching.

Desks

Avolites Sapphire 2000 (VENUE)
Jands Event 60/120 (can only be used in conjunction with Sapphire or Pearl in a two desk configuration controlling first 120 DMX channels via a DMX merger – see appendix)

Main Stage & Dance Floor





Drape Bar

12 metre (40ft) Litek triangular truss c/w 2 x PCM 225Kg Prostar motor

Normally carries house black serge drapes on back rail which can be left in place behind act's backdrop if required; plus mountings for house projectors and fibre optics where appropriate.

Back Truss

36ft Tomcat A-frame stacker c/w 2 x PCM Lodestar 1 tonne motor
 5 x Thomas six way PAR64 bar (2 paired and 1 single - Outer bars bulbed in CP62/centre in CP61)
 4 x Martin Mac600 moving head light (These can move position)
 4 x Martin Atomic 3000 strobe (These can move position)
 3 x Thomas 4 light DWE molefay (These can move position)

Mid Truss

36ft Tomcat A-frame stacker c/w 2 x PCM Lodestar 1 tonne motor
 2 x Thomas six way PAR64 bar (paired - bulbed in CP60)
 4 x Thomas four way PAR64 bar (grouped - bulbed in 500watt ray) (ACL)
 4 x Martin Mac500 moving head light (These can move position)

Front Truss

36ft Tomcat A-frame stacker c/w 2 x PCM Lodestar 1 tonne motor
 4 x Martin Mac500 moving head light (These can move position)
 4 x Thomas six way PAR64 bar (paired - bulbed in CP62)
 6 x ECT Source 4 profile c/w 19° lens
 2 x ECT Source 4 profile zoom
 2 x Anytronics Deathstar strobe

Dancefloor Truss

36ft Slick Minibeam c/w 2 x PCM Lodestar 1/2 tonne motor
 8 x Martin Mac250 moving head light
 4 x Martin Wizard Extreme moving mirror light
 1 x Anytronics Deathstar strobe
 1 x Anytronics Megastar strobe
 24" Mirror Ball

Drape/Décor Bar

16 metre Litek triangular truss c/w 2 x PCM Prostar 225Kg motor.

Normally carries 4 x 13 amp mains for décor.

Mezzanine

The Mezzanine system is arranged on three trusses hung as three sides of a rectangle.
 Main Truss

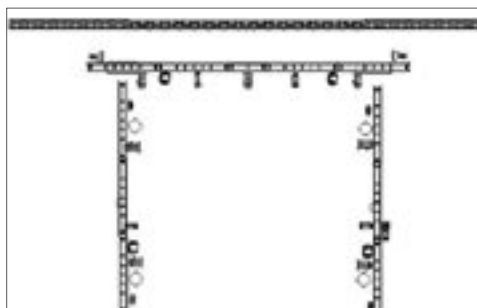
Main Truss

36ft Slick Minibeam c/w 2 x PCM Lodestar 1/2 tonne motor

3 x Martin Mac250 moving head light
 2 x Martin Acrobat moving mirror light
 2 x Thomas UV Cannon
 3 x PAR64 (grouped - bulbed in CP95)

Side Trusses

2 x 24ft Slick Minibeam c/w 2 x PCM Lodestar 1/2 tonne motor.
 Each carrying:
 2 x Martin Mac250 moving head light
 2 x Martin Wizard Extreme moving mirror light
 1 x Martin Acrobat moving mirror light
 2 x PAR64 (grouped - bulbed in CP95)
 2 x Anytronics Deathstar strobe
 Additionally the Stage Left truss carries 1 x Optikinetics GoboPro projector.
 Stage Right truss carries 1 x Leko profile.



Smoke/haze

Each stage PA stack has a Jem ZR22 smoke machine c/w timer.
 1 x Unique Hazer (water based fluid)
 (Please note Oil based hazers/smoke machines are not allowed due to damage of equipment)

Drapes

House drapes are:
 7 x 5m (depth) x 4.1m (width) Black Serge
 2 x 4m (depth) x 3m (width) Black Serge
 1 x 3m (depth) x 16m (width) Plasticated Gauze
 2 x 3m (depth) x 12m (width) Fibre Optic Gauze (Permanent on back drape bar on stage)
 Plus various black serge drapes for screen bases etc.
 Other drapes and starcloths can be hired in from local suppliers to order.

Manfrottos

We have two 3m manfrotto stands c/w 2m extension.

Misc

We do not allow any of the following without strict prior arrangement:

CO2 Cannons, Pyro, Lasers or any other potentially hazardous features such as Angle grinders.

Please note: we do not allow Confetti cannons of any sort (no matter how small) to be used in any of the venues.

Power

House dimmers are powered from a 200 amp three phase supply in the first floor dimmer room. This supply can be switched to a distro board at stage left if house dimmers are not being used which has the following outlets available:

125 amp three phase Powerlok
 125 amp three phase Ceeform
 2 x 63 amp three phase Ceeform
 1 x 63 amp single phase Ceeform
 2 x 32 amp three phase Ceeform
 2 x 32 amp single phase Ceeform
 1 x 16 amp single phase Ceeform

Please note: We can hire in Powerlok - Camlok adaptors or Powerlok - tail adaptors on request.

In addition the following power is always available at stage left:

1 x 63 amp three phase Ceeform (single phase adaptor available)
 1 x 32 amp single phase Ceeform
 2 x 16 amp single phase Ceeform

All power outlets are RCD protected and wired in accordance with the EEC wiring colours:

Earth - Green or Green & Yellow
 Neutral - Blue
 Live phase 1 - Brown
 Live phase 2 - Black
 Live phase 3 - Grey

Please note: that it is against our policy to mix and match the new colour codes with those previously in force.

PCM motors are controlled from a six way mobile controller which is supplied by a separate 32 amp three phase supply from the dimmer room.

Projection

53° has the following projection equipment, which is normally configured for back projection but can be re-rigged for front projection by arrangement

1 x Sharp PG-A10s LCD projector
 2 x Sharp PG-B10s LCD projector
 2 x 12' x 9' fastfold back projection screen c/w legs
 1 x 8' x 6' fastfold back projection screen c/w legs
 2 x 6' x 6' front projection screen (suspension only)
 Edirol V4 vision mixer with Twin rack mount TFT monitors
 Arkaos VJ3 software
 DVD playback

Our normal projection configuration for club events (in venue) is one 12' x 9' screen at each side of the stage next to the PA stacks with the DJ central, back projected from the drape bar, and the third 8' x 6' screen behind the DJ/Band upstairs in the club.

Please note we only have the facility to run Arkaos in one venue at a time unless another laptop and software gets provided



Lasers

Although 53Degrees does not have lasers in house we are able to hire in to order from outside suppliers on request. As use of lasers requires prior notification to licensing authorities and HSE we will require at least three weeks notice if lasers are to be used.

Club

The Club has a capacity of 400 and is situated on the first floor at the front of the building. Load-in is via service lift from side access road or stairs to dressing room area. Parking is as Venue.

The stage is 17' wide x 14' deep x 2' high. There is also a fixed DJ booth adjacent to the dancefloor.

Sound

Left and right stacks consisting of:

- 1 x Kling & Freitag SW115 sub
- 1 x Kling & Freitag SW215 sub
- 1 x Kling & Freitag Line 212-6 mid/top
- 6 x Kling & Freitag CA1215-6 wedges
- 1 x Ohm 15" + 2" wedge (for drum fill)
- 1 x Kling & Freitag SW115 sub (for drum fill)
- 2 x Yamaha PN9500S amplifier (FOH)
- 2 x Yamaha PN4800S amplifier (monitors)
- 1 x Lab Gruppen Lab1300c amplifier (monitors)

Kling & Freitag C2 system controller

- Allen & Heath GL3300 40:8:2 FOH/monitor desk
- 4 x Apex GX230 dual 31 band graphic equaliser
- 2 x Drawmer DS401 quad gate
- 2 x Drawmer DL441 quad compressor
- 2 x Yamaha SPX2000 multieffects
- 1 x Lexicon MPX100 reverb
- TEAC CD player

Up to 6 monitor sends are available from Front of House.

Microphones/DI

- 6 x Shure SM58
- 10 x Shure SM57
- 2 x Beta 58a
- 2 x Beta 57a
- 1 x Beta 52a
- 2 x Sennheiser e606
- 2 x Sennheiser K6P condenser mic
- 2 x Sennheiser E602 kick drum mic
- 4 x Sennheiser E604 tom clip mic
- 6 x BSS AR133 active DI box
- 3 x EMO passive DI box

Lighting

The Club lighting rig is run on Anytronics 6 way DMX dimmers situated in the dimmer room adjacent to the main stage. The Avolites Pearl desk is available for club lighting use.

Stage - Back Truss

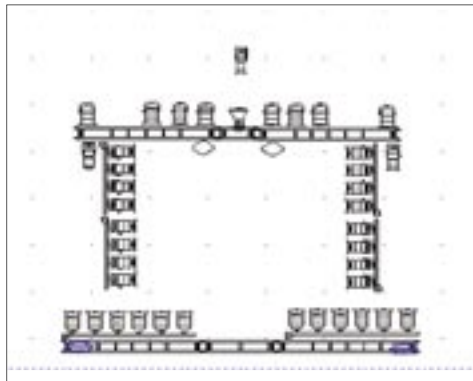
- 20ft Slick Minibeam c/w 2 x PCM Lodestar 1/2 tonne motor
- 2 x Thomas six way PAR64 bar (paired - bulbed in CP62)
- 2 x Anytronics Megastar Strobe

Side Beams

At each side of the stage are 2 x Thomas 4 way PAR64 bar suspended from the truss beams. These are bulbed in 500 watt ray bulbs and are paired up.

Front Truss

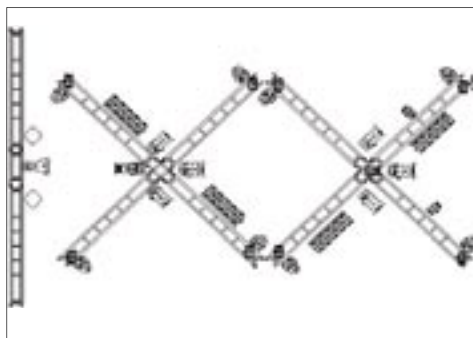
- 18ft Slick Minibeam c/w 2 x PCM Lodestar 1/2 tonne motor
- 8 x Thomas PAR64 (paired - bulbed in CP95)
- 2 x ECT Source 4 zoom profile
- 2 x Martin Synchrozap moving mirror light
- 1 x Thomas UV cannon



Dancefloor - Front Truss

- 1 x ECT Source 4 zoom profile Front Truss
- 2 x Martin Synchrozap moving mirror light
- 1 x Thomas UV cannon
- 2 x Slick Minibeam 'X' array each c/w
- 4 x PCM Lodestar 1/2 tonne motor.
- Each carrying:
- 4 x Martin MiniMac profile moving head light
- 2 x Martin Destroyer rotating mirror light
- 2 x Martin Ego X5 rotating mirror light
- 3 x Anytronics strobe pod
- 4 x Mode Electronics Arcline

The end 'X' truss also carries 3 x Optikinetics Solar 250 projector c/w oilwheel plus 1 x CCT 650 watt Fresnel for lighting DJ booth.



Drapes

Backdrop drape is hung from rear rail of back truss and comprises 25' x 10' black serge drape. Other drapes and star cloths can be hired in to order.

Power

Power for sound, backline and front of house is situated at stage right and consists of a 63 amp single phase RCD protected Ceeform, with a rackmounted distributor to split it down to four 16 amp Ceeforms.

Lighting power is situated at stage right and comprises of a single 32 amp three phase RCD protected Ceeform with a distribution board dividing it down to six 16 amp single phase Ceeforms.

Projection

By prior arrangement we can install one of the venue Sharp projectors c/w 8' x 6' screen on the club stage for back or front projection.

DJ Equipment

Any combination of the following (dependent on events) can be arranged in either room.

- 5 x Technics 1210 Mk 2 DJ turntable
- 2 x Pioneer CDJ1000 Mk 3
- 3 x Pioneer CDJ1000 Mk 1
- 2 x Pioneer CDJ1000 Mk 2
- 1 x Pioneer EFX1000 DJ effects unit
- 1 x Allen & Heath X:one 464 mixer
- 1 x Allen & Heath X:one 62 mixer
- 1 x Pioneer DJM600 mixer
- 1 x Pioneer DJM800 mixer

Dressing Rooms

All dressing rooms are situated on the first floor of the Venue.

Dressing Room 1

9m x 3.80m. Has integral shower & toilet, large fridge, 3 x three seater sofa, full length mirror, clothes rail, assortment of chairs, tables for riders etc, internal phone point, wi-fi and 32" Plasma TV.

Dressing Room 2

3.88m x 3.33m plus 3.31m x 1.95m (L shaped) Has integral shower & toilet, large fridge, three seater sofa, assortment of chairs, table for riders etc, internal phone point, wi-fi and 32" Plasma TV.

Dressing Room 3

2.77m x 2.68m. Has integral toilet, large fridge, assortment of chairs, tables for riders etc., internal phone point.

Production Office

The Production Office is situated on the ground floor between the stage door and the venue stage. It has three desks, two external phones, fax, broadband & wireless, photocopier, small fridge, microwave, and chairs for visitors.

Tour Managers' Tuck Shop

We now stock various bits and pieces for Tour Managers and Bands including: Guitar/Bass, strings, Sharpies, Pens, Lanyards, Ink Cartridges (selected models only), Plectrums, AA and 9v Batteries.